



Hold malice defeat



The security solution



Servtel
Ingénierie sécuritaire

To obtain the good image at the good time
**OBTENIR LA BONNE IMAGE
AU BON MOMENT**

LARISS SYSTEM

Acquisition
vidéo
numérique
LARISS™

ANTI INTRUSION

ACCES CONTROL

NUMERIC REQUIREMENT


Safety as you would like it
La sécurité comme vous l'aimeriez

LARISS[®]
INTERPRETEUR
SYSTEME

Safety system and home automation

SERVTEL BP 610 – 45306 PITHIVIERS CEDEX
SIEGE SOCIAL et ETABLISSEMENT – 5 rue Basse - 45300 COURCELLES
TEL 02 38 33 42 01 FAX 02 38 33 42 03
SARL au Capital de 100.000 EUROS RCS Orléans 2004B173 - SIRET 384.849.402.00035 APE 742C
Numéro Intracommunautaire FR92384849402
Email servtel@free.fr

SUMMARY

LARISS PACK SYSTEM	3
PRINCIPLE OF OPERATION OF SAFETY PACK	3
L'ARMOIRE CENTRALE LARISS SYSTEM	4
COMPOSITION D'UN POINT DE CONTROLE	5
KIT ZONE LARISS PACK SYSTEM	5
MAIN FEATURES SOFTWARE	6
INTRUSION SOFTWARE-ACCES CONTROL and DOMOTIQUE	6
DIGITAL VIDEO SOFTWARE ACQUISITION	6
LARISS SYSTEM PACK ZONES	7
THE CONCEPT  SYSTEM	8
WHO ARE WE ?	9
REFERENCES	10

LARISS PACK SYSTEM

PACK OF CALLING FOR SAFETY

**ALL COMMERCIAL ACTIVITIES: BUSINESS, THE PROFESSIONS, COMMERCE AND SO ON
ORGANISED**

A cabinet that is linked to central control points installed in remote areas to monitor (building, room, computer room, archives, stocks and so on.). The remote (boxes zones) are equipped with subsets and useful devices connecting peripherals necessary for the management of the area they will control. The central cabinet contains all the necessary hardware (card management, PC video capture digital transmitter telephone box off screen / keyboard / mouse on the PC.) To monitor, from distant points, one or more building (s).

PRINCIPLE OF OPERATION OF SAFETY PACK

(See also Lariss System Concept on following pages)

The site is equipped with detectors and volumetric opening contacts. The environment is the subject of scenarios adaptable to calendars and schedules profiles. Very few manipulations are requested from the user. For example, here's a scenario put under protection:

1. The lack of detection on the volumetric area causes validation of a scenario pre Security
2. A message requesting identification is issued
3. To the extent that any detection is found, the area is automatically placed under anti intrusion with information to the central station
4. Moving from the badge (or code) status responsible causes deactivation intrusion of the area corresponding to a further lack of detection volume.

Access control manages various models of card readers with different rights for each badges (schedules, tasks and calendars). A hierarchy can be sorted standard badges, badges managers and supervisors with features specific to each. The capacity is 400 badges (or codes) to 16 characters. In addition to the intrusion and access control, detection generate specific actions in the field of prevention (eg fire alarm voice, calls to close a door.), Or in the comfort (For example action on the entry chime = message, "a visitor asks you"). All parameters of the shares are attributable to different time profiles (ex message issued non-fire during the shutdown of the site).

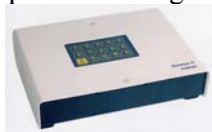
L'ARMOIRE CENTRALE LARISS SYSTEM

A cabinet Central LARISS SYSTEM contains all the elements of site management to control and acquire digital video



It includes electronic cards, the information transmission and the CPU server for recording video images.

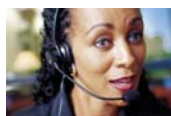
The Security LARISS SYSTEM Packs have a transmitter telephone warning



Which can be connected to mobile phones Officials



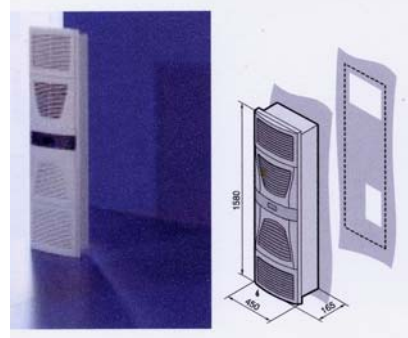
Or directly to a central station



Lariss The system comes with its software and an Ethernet backwardation Screen / Keyboard / Mouse (up to 100m). A broadband Internet connection can manage the system remotely from another PC.



Cabinets are broken and can be air-conditioned (option) to secure an internal



temperature operating reasonable .

The packs include two relays power (220V AC cut 10A) command apparatus (air, for example) and light.

The cupboard is equipped with a 220V AC power supply / 13.80 to 10.50 VDC A. In case of power failure, a battery 12V 18A provides auto supply network. Security. Although power 220V AC is constantly monitored, an inverter 5mn protects the PC.

According options, the Pack can handle up security:

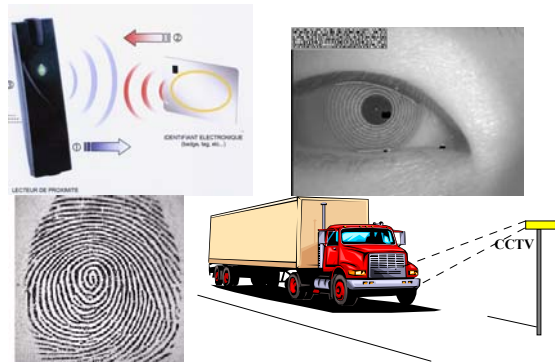
- 16 Independent zones
- 64 Outings
- 128 Entries
- 64 Badge readers
- 32 Video cameras
- 1 Off screen, keyboard. (100m)
- 1 Telephone transmitter
- 1PC
- 1 Inverter (5mn)

COMPOSITION D'UN POINT DE CONTROLE



A box car protected high-strength plate sealing and closing key. Contains

- 1 Circuit breaker protection
- 1 Food 220VCA/12VCC A 10.5
- 1 NIC Lariss his SnUM
- 1 NIC Lariss LB8E / S
- 2 Badge readers (incoming / outgoing)
(Depending on the chosen technology)



Inputs / Outputs item:

- 2 Entries badge readers
- 1 Command output device
- 1 Release command light
- 1 Command exit door
- 1 Release command issuer smoke
- 1 Entry volumetric detectors
- 1 Contact input sucker
- 1 Entry contacts Opening
- 1 Entry chime voice
- 1 Technical entry
- 1 Entrance fire
- 1 Entered emergency alert
- 1 Entrance presence 220volts CA

Access control is proposed according to the different options (proximity badge reader without contact, microwave and biometric readers). On options, reading license plates from vehicles, satellite geolocation intrusion detection and imaging can also be connected to the products PACKS LARISS SYSTEM.

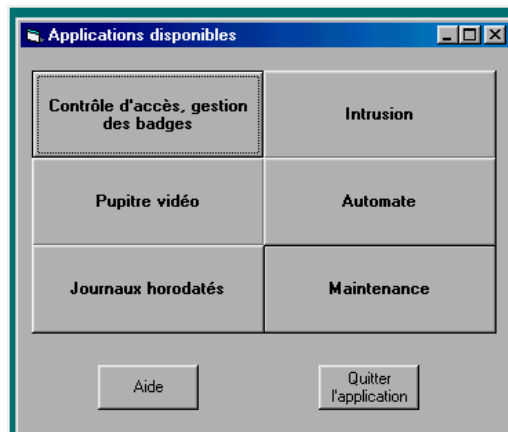
KIT ZONE LARISS PACK SYSTEM

Kits peripheral equipment for the areas are available as an option. These kits include:

- ✚ waterproof camera 1 day / night
- ✚ 20m + coaxial KX3 Alim
- ✚ 20m cable network Belden
- ✚ 1 suction | electromagnetic force contact with 300kgs
- ✚ 1 switch brie ice
- ✚ 4 contacts Opening
- ✚ 2 volumetric detectors twice technology

MAIN FEATURES SOFTWARE

MULTI APPLICATIONS SYSTEM



INTRUSION SOFTWARE-ACCES CONTROL and DOMOTIQUE

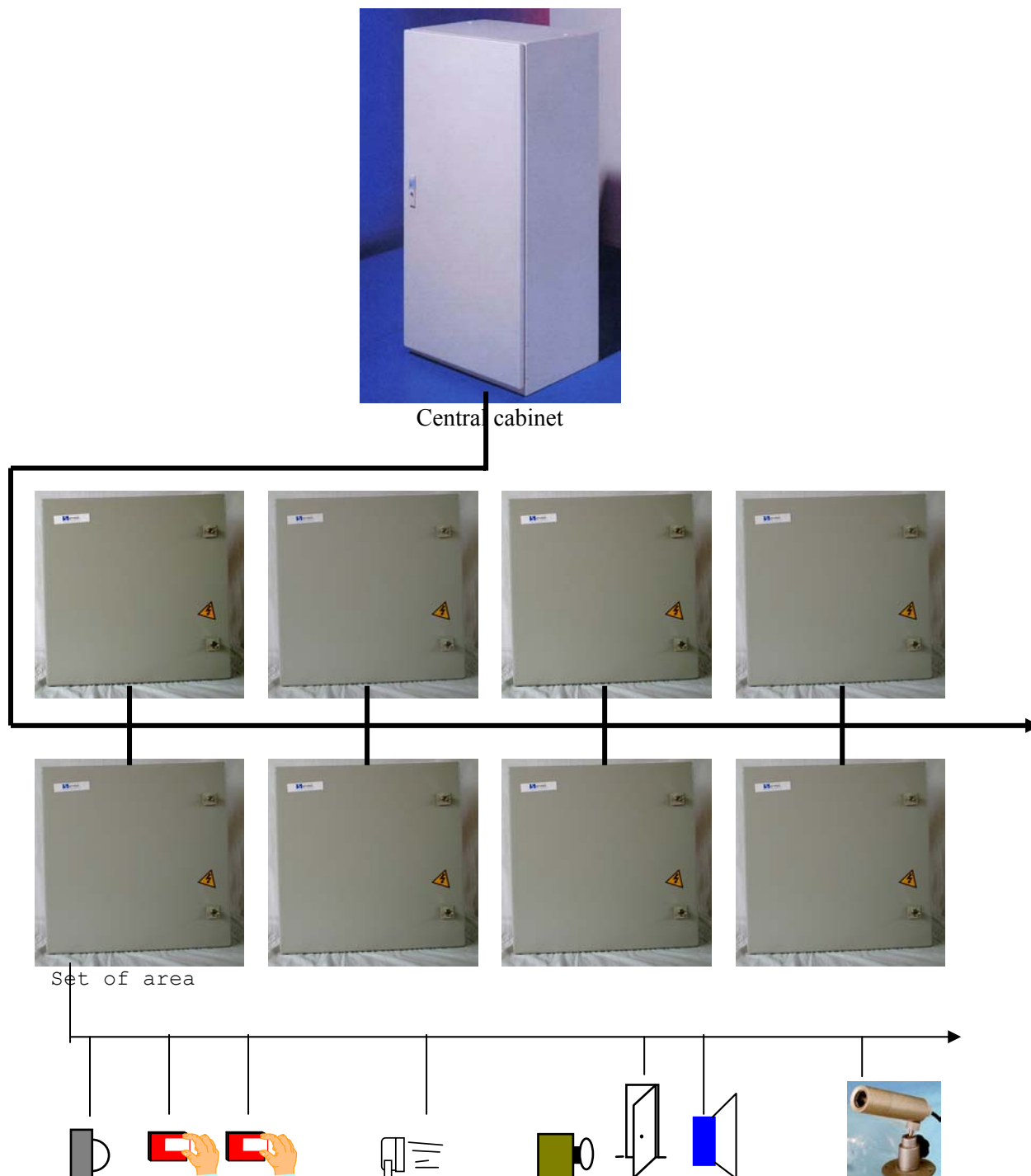
- + Password Protection
- + System dropdown
- + Setting schedules and time slots for each function (badges, intrusion detection, taking video images etc.).
- + Automatic Protection zone on the basis of criteria, and / or, profiling schedules
- + Control access to three levels (400 badges or codes to 16 characters)
- + Surveillance detection thresholds mini and maxi

DIGITAL VIDEO SOFTWARE ACQUISITION

- + Analog video inputs (with optional IP converters)
- + Pupitre command to set up each camera
- + Viewing real-time images
- + Multi windowing parameterizable
- + Registration real-time images
- + VCR with digital zoom
- + Image Search multi criterion

LARISS SYSTEM PACK ZONES

The cupboard is connected to boxes areas. It manages the environment of each case or are connected various devices useful.



Metered detector, card readers, control light, BBG security command door, camera, speakerphone for messages.

THE CONCEPT SYSTEM



PROCESSUS ACTIF EN RESEAU INTERPRETEUR DE DONNEES A CAPACITE DECISIONNELLE
ETABLIE SELON UNE HIERARCHIE MULTI NIVEAUX.

LOGICAL AUTOMATION REALIZED by INTERPRETER SAFETY SYSTEM

LARISS is a powerful system for handling multiple applications of events because it is possible to implement many functions such as:

- + Anti intrusion
- + Access control
- + The detection techniques varied
- + The management business (vehicles, stocks, trial production processes etc.).
- + Further action in the event of fire detection
- + Acquiring Digital Video

LARISS manages a wide range of scenarios in order to automate, by theme, these different functions. LARISS applies the principle of Active Safety. It can integrate a wide variety of peripherals on the market. Each network map LARISS can be completely autonomous and LARISS settings can be changed dynamically at any time.

VALUE ADDED

LARISS SYSTEM carries a maximum prevention and relieves management of sites equipped. The vocal part (transmission of information, advice and disincentives) offers additional interventions and immediate information when situations warrant.

Used daily intuitive LARISS with, for example: a flexible access management to reinstate automatic monitoring zones, does not add any difficulties in practice.

Objectives:

- + assisted management and optimized systems.
- + automatic permanent Prevention
- + Information Dissemination synthetic and understandable without decoding.

Strengths:

- + Liaisons network by simple twisted pair whose topology is free
- + Transport secure information on the network
- + Opportunity to connect many devices
- + Setting functions virtually unlimited



Ingénierie sécuritaire

WHO ARE WE ?

SERVTEL is an engineering company founded in April 1992. Through the "safe engineering" Servtel perform the following activities:

- + Studies and custom systems
- + Manufacturer and distributor of environmental LARISS SYSTEM
- + Integrator

SERVTEL also developing specific applications tailored to the needs of businesses In the following areas:

- + Counting Industry
- + Specialized Management
- + Software
- + Digital Video Acquisition

SERVTEL has designed and developed a treatment called events. LARISS SYSTEM. Including maps, and software modules are manufactured in France.

SERVTEL, through its engineering division, offers listeners high levels and offers the following services:

- + Studies Audits Councils Risk analysis
- + Help to investment decisions
- + Project Management
- + Diagnostic procedures and systems
- + Taken conscience and formations

Our experience in proprietary tools and implementation of semantic analysis tools powerful opens a wide range of skills to model any type of complex issue.

REFERENCES

 L'ENTREPRISE <i>SARL Capital : 200.000 EURO Création : Avril 1992</i>	 THE COMPANY <i>SARL Authorized capital 200.000 EUROS Created on April 1992</i>
DOMAINES	APPLICATIONS
<i>Sécurité des personnes</i> Agressions, violences Engins, machines et milieux dangereux	Person's Safety Attack, violence Dangerous machines and areas
<i>Sécurité des biens</i> Vol, vandalisme (destructions tags sabotages)	Goods Safety Theft, vandalism (destructions, tags, sabotages)
<i>Gestion des Droits d'accès</i> Identifications conventionnelles et biométriques	Acces control Classic and biométric identification
<i>Gestions spécialisées</i> Chaînes de productions, Parcs de véhicules, Containers	Special management Production, vehicle fleet, Containers
<i>Audit, Conseil et Formations</i> Analyses de risques, diagnostics Conseil de mise en sûreté Formations utilisateurs, investissements (aide décisionnelle)	Consulting and training Risk analysis Advice for securization Training , help to safety investment's definition
DEVELOPPEMENTS	PRODUCTS
 Interpréteur de données à capacité décisionnelle Système de traitement d'informations et de gestion dont le principe repose l'analyse de la nature des actions en cours, l'intelligence de réaction et la centralisation assistée de la supervision	 Hardware and Software for NEURONAL NETWORK dedicated to Safety application and logical process control
REFERENCES	REFERENCES.
  CENTRE DE PAIEMENTPASS     CEMA GROUP Maroc	  CENTRE DE PAIEMENTPASS     CEMA GROUP Maroc